



504-362-0781 or 800-889-0781

2236 Manhattan Blvd. Harvey, LA 70058 Fax: 504-367-4216

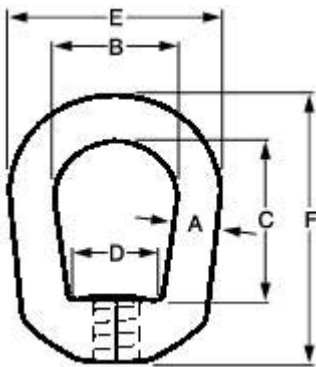
Drop Forged Eye Nuts

CAUTION: NEVER EXCEED THE WORKING LOAD LIMIT.

SELF COLORED, GALVANIZED and STAINLESS STEEL, TYPE 316.

** CAUTION: Due to the nature of stainless steel, deformation may occur at proof loads exceeding 7000 pounds.

* #2A thru #4A available in 316 stainless steel



Size No.	Thread Size	Work Load Limit in lbs.	Bail A	Weight in lbs.	B	C	D	E	F
Size No.	Thread Size	Work Load Limit in lbs.	Bail A	Weight in lbs.	B	C	D	E	F
#1	1/4" - 20	520	1/4"	.09	.75	1.00	.66	1.25	1.69
#1A	5/16" - 18	850	1/4"	.09	.75	1.00	.66	1.25	1.69
#2A *	1/4" - 20	520	5/16"	.15	1.00	1.19	.75	1.63	2.06
#2B *	5/16" - 18	520	5/16"	.15	1.00	1.19	.75	1.63	2.06
#2 *	3/8" - 16	1,250	5/16"	.15	1.00	1.19	.75	1.63	2.06
#3A *	1/2" - 13	2,250	3/8"	.27	1.25	1.44	1.00	2.06	2.50
#4B *	3/8" - 16	1,250	1/2"	.57	1.50	1.88	1.25	2.50	3.13
#4C *	1/2" - 13	2,250	1/2"	.57	1.50	1.88	1.25	2.50	3.13
#4 *	5/8" - 11	3,600	1/2"	.57	1.50	1.88	1.25	2.50	3.13
#4A *	3/4" - 10	**5,200	1/2"	.57	1.50	1.88	1.25	2.50	3.13
#5	3/4" - 10	5,200	5/8"	.97	1.75	2.31	1.38	3.00	3.95
#6	7/8" - 9	7,200	3/4"	1.69	2.00	2.50	1.63	3.50	4.40
#6A	1" - 8	7,200	3/4"	1.69	2.00	2.50	1.63	3.50	4.44
#8A	1.1/8" - 7	12,300	1"	3.85	2.50	3.37	1.88	4.40	5.62
#8	1.1/4" - 7	15,500	1"	3.85	2.50	3.44	1.88	4.40	5.62
#8B	1.3/8" - 6	15,500	1"	3.85	2.50	3.44	1.88	4.40	5.62
#8C	1.1/2" - 6	15,500	1"	3.85	2.50	3.44	1.88	4.40	5.62
#11A	1.3/4" - 5	30,500	1.1/2"	18.70	4.00	6.25	3.88	7.00	10.00
#11	2" - 4.1/2"	40,000	1.1/2"	18.70	4.00	6.25	3.88	7.00	10.00
#11B	2.1/4" - 4	40,000	1.1/2"	18.70	4.00	6.25	3.88	7.00	10.00
#11C	2.1/2" - 4	40,000	1.1/2"	18.70	4.00	6.25	3.88	7.00	10.00
